

# Semi Conductor Fuse Holder

## Box Version - Specifications:

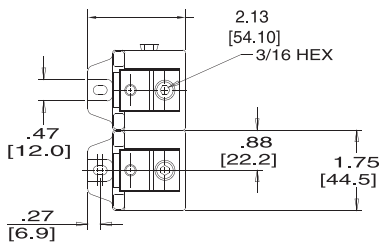
- Insulator Base, General Purpose Phenolic, 150° C
- Hex-Head Bolts and Belleville Washers Provided Unassembled
- Connector-Aluminum, Tin Plated
- 1MS101 has dove-tail interlocking feature
- Two-piece modular design
- UL Recognized File No. E35113



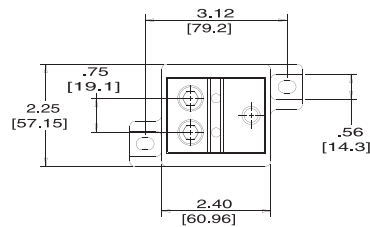
## 600 Volt

Catalog #:	Maximum Amperage:	Wire Range:
1MS101	100	#2/0 - #14
1MS102	400	(2) 250 kcmil - #6
1MS103	400	(2) 250 kcmil - #6
1MS104	600	(2) 500 kcmil - #6

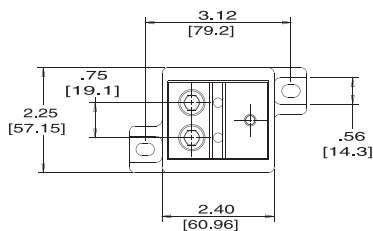
**Note: Order two blocks per fuse.**



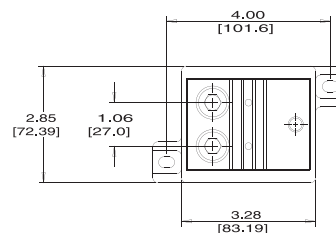
**1MS101**



**1MS103**



**1MS102**



**1MS104**